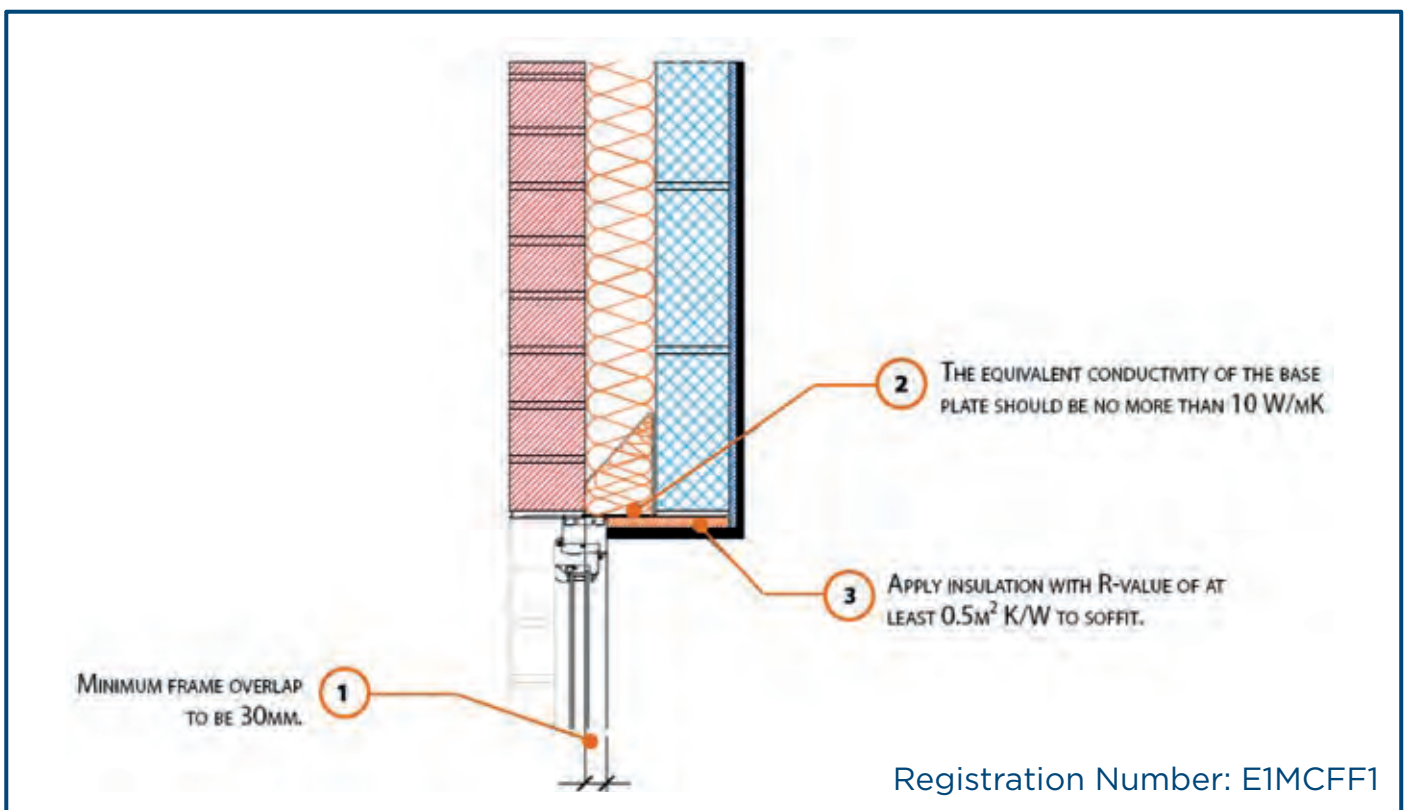


E1MCFF1 - Insulated Steel Lintel

LABC Registered Construction Details Insulated Steel Lintel



Build Up

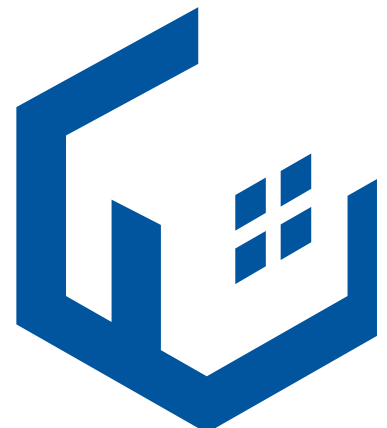
External Masonry Cavity Wall

Masonry Outer Leaf ($\lambda = 0.77$)

Ultra Lightweight Concrete Block Inner Leaf ($\lambda \leq 0.28$ W/mK)

Full Fill Insulation

2mm Folded Steel Lintel with Perforated Baseplate



Calculated ψ values

	Inner leaf blockwork
	Ultra Lightweight Concrete Block $\lambda \leq 0.28$ W/mK
Cavity Insulation	ψ -value W/mK
100mm $\lambda = 0.037$	0.292
100mm $\lambda = 0.032$	0.302
150mm $\lambda = 0.037$	0.305
150mm $\lambda = 0.032$	0.313

Points to Watch

- In certain situations, the lintel may also require fire resistance.
- Ensure that a 2mm thick lintel is available for the required opening width.
- A flexible sealant should be used between all interfaces of the internal air barrier and the window / door frame members.
- Ensure cavities are kept clean of mortar spots and other debris during construction.



Product Specification

E1MCFF1 INSULATED STEEL LINTEL	Masonry Cavity	E1	Full Fill
Cavity Insulation Options - 100mm - 0.037 W/mK	Knauf Insulation - Earthwool DriTherm Cavity Slab 37 Standard - 100mm - 0.037 Rockwool - Cavity - 100mm - 0.037		
Cavity Insulation Options - 100mm - 0.032 W/mK	Isover - CWS 32 - 100mm - 0.032 Knauf Insulation - Earthwool DriTherm Cavity Slab 32 Ultimate - 100mm - 0.032		
Cavity Insulation Options - 150mm - 0.037 W/mK	Knauf Insulation - Earthwool DriTherm Cavity Slab 37 Standard - 150mm - 0.037		
Cavity Insulation Options - 150mm - 0.032 W/mK	Isover - CWS 32 - 150mm - 0.032 Knauf Insulation - Earthwool DriTherm Cavity Slab 32 Ultimate - 75mm x 2 - 0.032		
Ultra Lightweight Concrete Block Options <= 0.28 W/mK	Aggregate Industries - Masterlite Ultra - 0.27 Cheshire Concrete - Laylite - 0.25 Interfuse - Interlyte Ultra - 0.23 Interfuse - Optilyte 0.19 Lignacite - Fibro 850 Commodity Blocks - 0.25 Llanharan Concrete - Lightweight - 0.25 Plasmor - Fibolite - 0.24 Sellite - Ultra Lightweight - 0.25 Skene Group - Glensupalite Ultra Lightweight Aggregate Block - 0.23 Thos. Armstrong - Ultralite Low Density Lightweight Aggregate Block - 0.25		
Steel Lintel	Birtley - CB Series Catnic		
Wall Ties	Ancon - HRT4 ties (up to 10 metres maximum building height) Ancon - RT2 ties (up to 15 metres maximum building height) Ancon - ST1 ties (Any height)		
Thermal Laminate Board (Soffit)	British Gypsum - Thermaline Basic 30mm British Gypsum - Thermaline Plus 27mm British Gypsum - Thermaline Super 50mm British Gypsum - Thermaline PiR 38mm Kingspan - Insulated Plasterboard K17 37.5mm Kingspan - Insulated Plasterboard K18 37.5mm Recticel - Eurothane PL 37.5mm Siniat - GTEC Thermal 30mm Siniat - GTEC Thermal K 30mm Siniat - GTEC Thermal PiR 37.5mm Siniat - GTEC Thermal XP 27mm		

For more information on the Build Aviator SAP, Material Estimating, Acoustic Testing and Air-tightness Testing services please visit www.buildaviator.co.uk